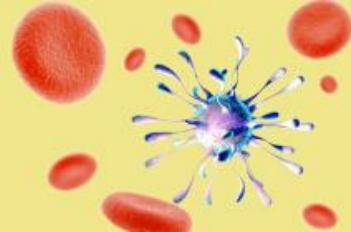


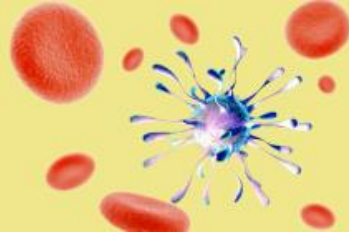
Medicine and Life Sciences



Week One

This is a sample timetable for the Medicine and Life Sciences Global Summer School 2025.

| Week 1: Medicine and Life Sciences | | | | | | | |
|------------------------------------|--|---|--|---|---|--|---|
| | Monday | Tuesday | Wednesday | Thursday | Friday | Saturday | Sunday |
| Morning | Arrivals 11.00–14.00 | Medicine 09.30–12.30 | Clinical Skills at St Mary's Hospital 09.30–12.30 | Life Sciences 09.30–12.30 | Life Sciences 09.30–12.30 | Brighton Day Trip (Groups 1 and 2) 09.00-19.00 | Explore South Kensington and sports activities (Groups 1 and 2) 09:30-16.00 |
| Afternoon | Registration, induction, and orientation 14.00–16.00 Welcome talk 16.00–17.00 | Medicine 13.30–14.00 Masterclass 16.45–17.45 | Clinical Skills at St Mary's Hospital 13.30–16.30 | Life Sciences 13.30–16.30 Masterclass 16.45–17.45 | Life Sciences 13.30–16.30 | | |
| Evening | Dinner and icebreaker activities 19.00–21.30 | Sports and on campus activities (Group 1) 18.00–20.00 On campus activities (Group 2) 18.00–20.00 | Theatre trip Matilda (July only) Wicked (August only) (Group 1) 18.00–23.00 Tenpin bowling and dinner (Group 2) 17.00–21.00 | On campus activities (Group 1) 18.00–20.00 Sports and on campus activities (Group 2) 18.00–20.00 | Sightseeing bus tour (Groups 1 and 2) 17.30–20.30 | | Talent Show (Groups 1 and 2) 19.00-22.00 |



| | Monday | Tuesday | Wednesday | Thursday | Friday |
|------------------|--|--|--|---|---|
| Morning | Welcome 09.30–12.30 | Project work 09.30–12.30 | Project work 09.30–12.30 | Prepare for presentations 09.30–12.30 | Finale brunch and departures 08.30–13.00 |
| Afternoon | Project work 13.30–16.30 | Project work 13.30–16.30 Masterclass 16.45–17.45 | Project work 13.30–16.30 | Presentations 13.30–16.30 | |
| Evening | River Thames boat party (Groups 1 and 2) 17.00–23.00 | Sports and on campus activities (Group 1) 18.00–20.00 | Tenpin bowling and dinner (Group 1) 17.00–21.00 Theatre trip Matilda (July only) Wicked (August only) (Group 2) 18.00–23.00 | Finale celebration (Groups 1 and 2) 18.00–23.00 | |

Please note:

- This timetable is indicative and subject to change. A full timetable including catering times, class times, and locations, will be available on the Guidebook app closer to the programme start date.
- Students will be split into two groups when participating in the social activities. Both groups will take part in the same activities, at different times. Groups will be confirmed after students have registered for the programme.