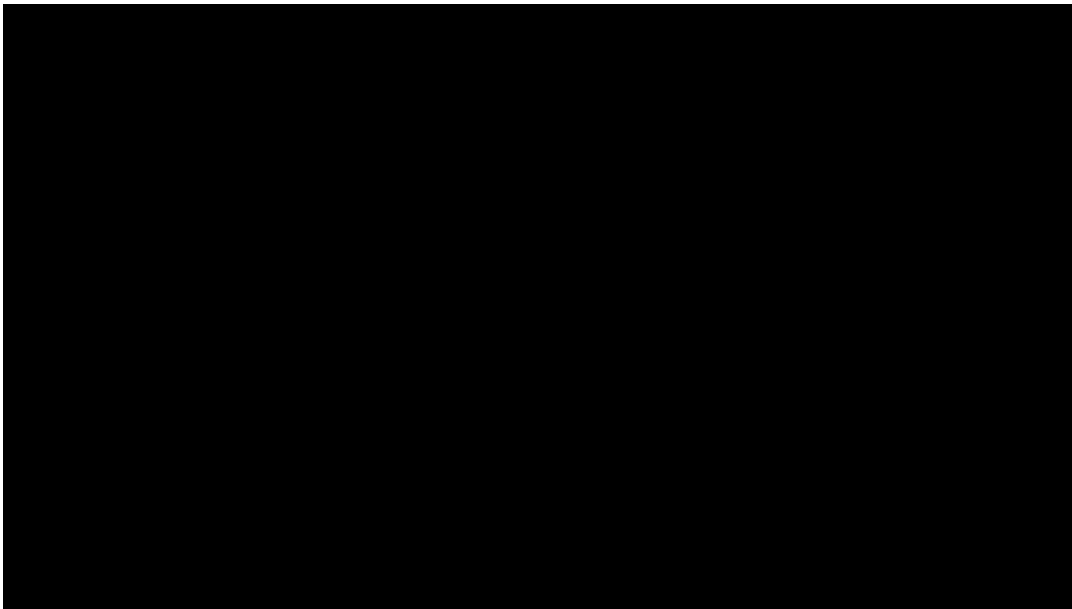


Department of Electrical and Electronic Engineering

Day One Safety Induction

Imperial College
London

Postgraduate Safety Video



Emergency Contact Numbers

In the event of an **emergency** anywhere on campus

- Please dial 4444 from any internal phone
- Store and dial 0207 589 1000 from your mobile phone
- Both numbers will direct you to our 24 hour Security Office based in Sherfield Building
- Do **NOT** dial 999 or 111 as Emergency Services will not be able to gain access in secured areas

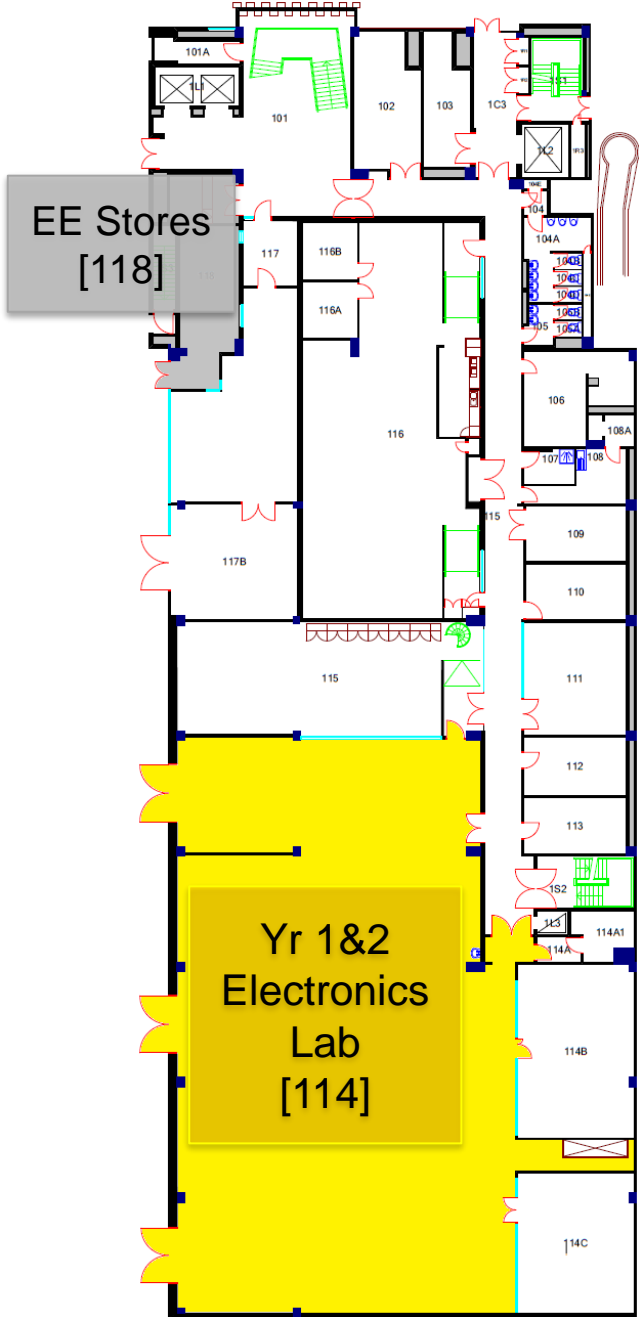
COVID 19 Safety Information

Please visit the [Imperial College COVID-19 Contact Tracing Hub \(CCT Hub\)](#)

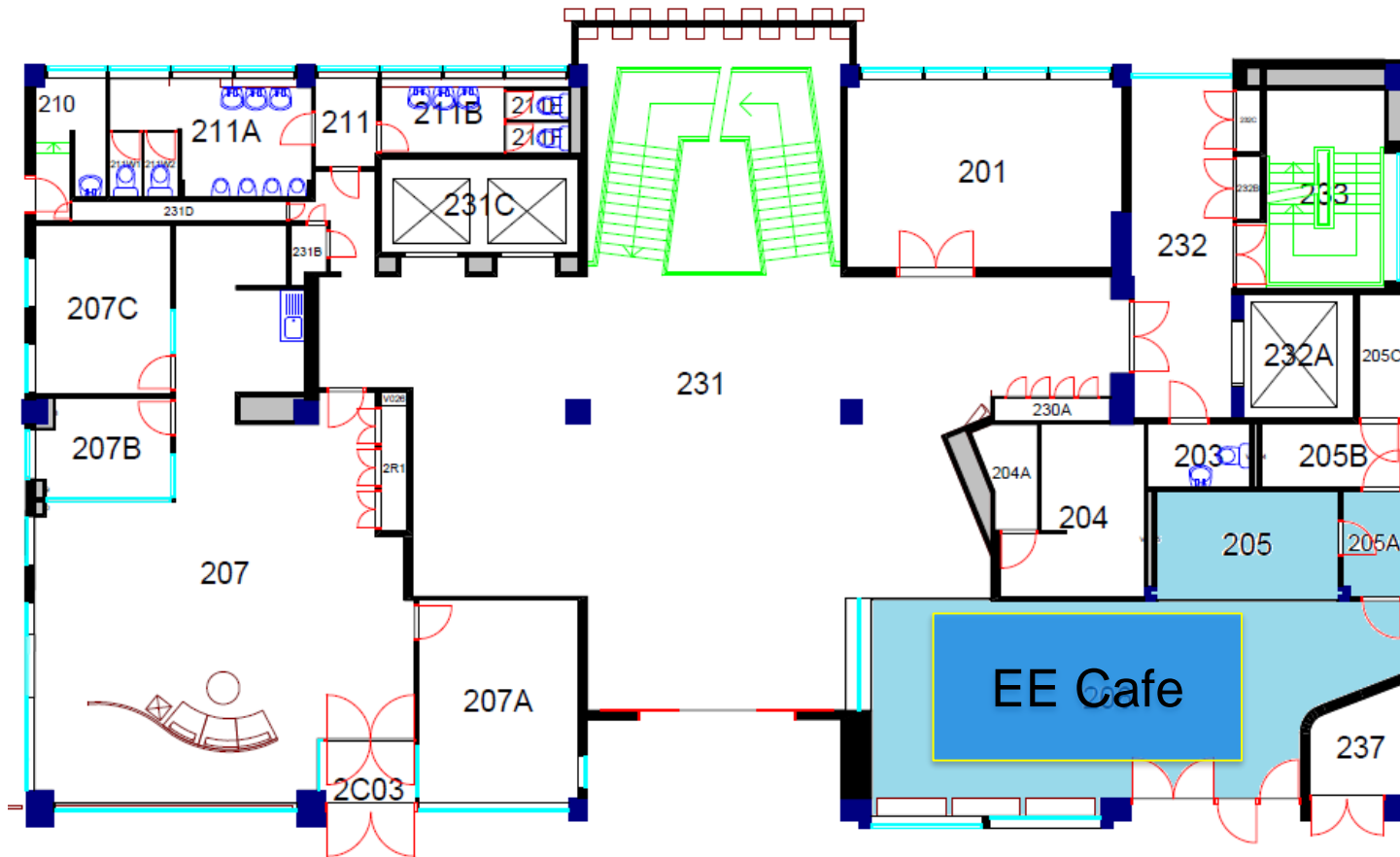
- if you have symptoms and are awaiting a test or test result
 - if you receive a positive test
 - if you or someone in your household is displaying symptoms
 - if you're a close contact of someone with the virus
-

Imperial College
London

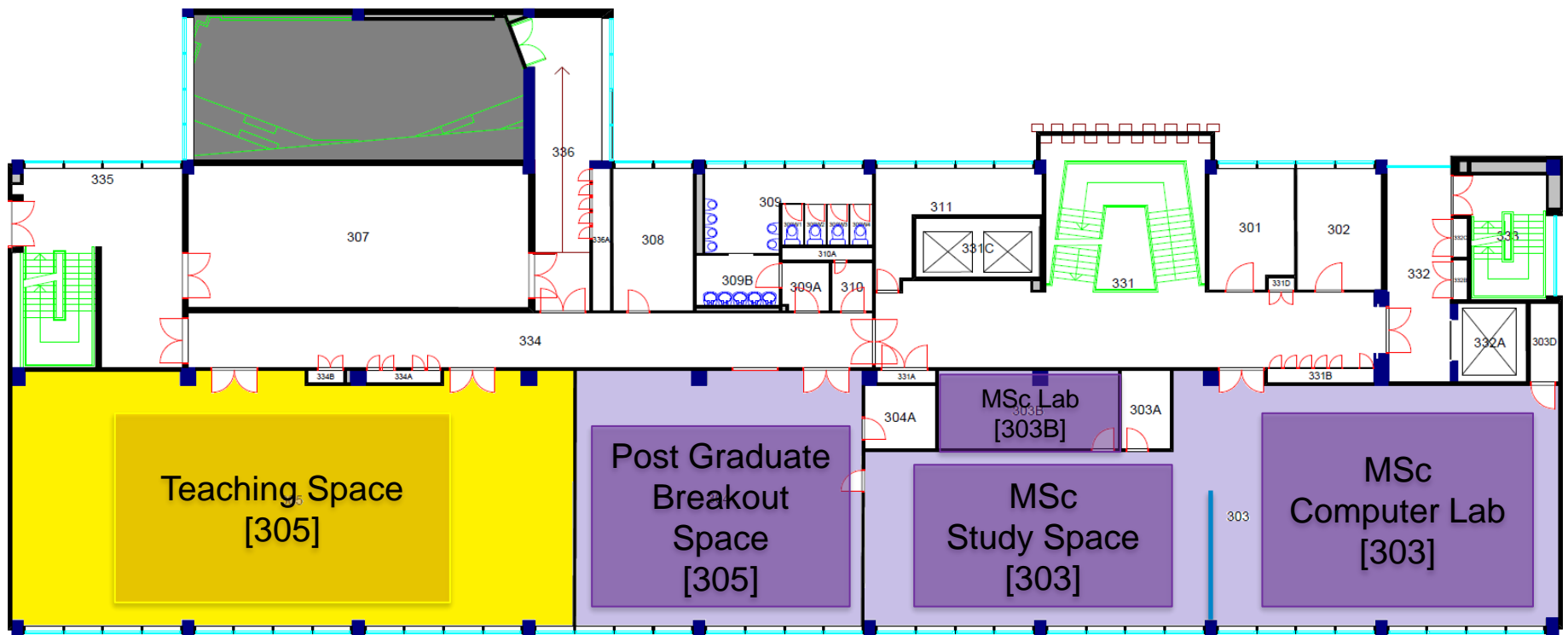
Level 1 Floor Plan



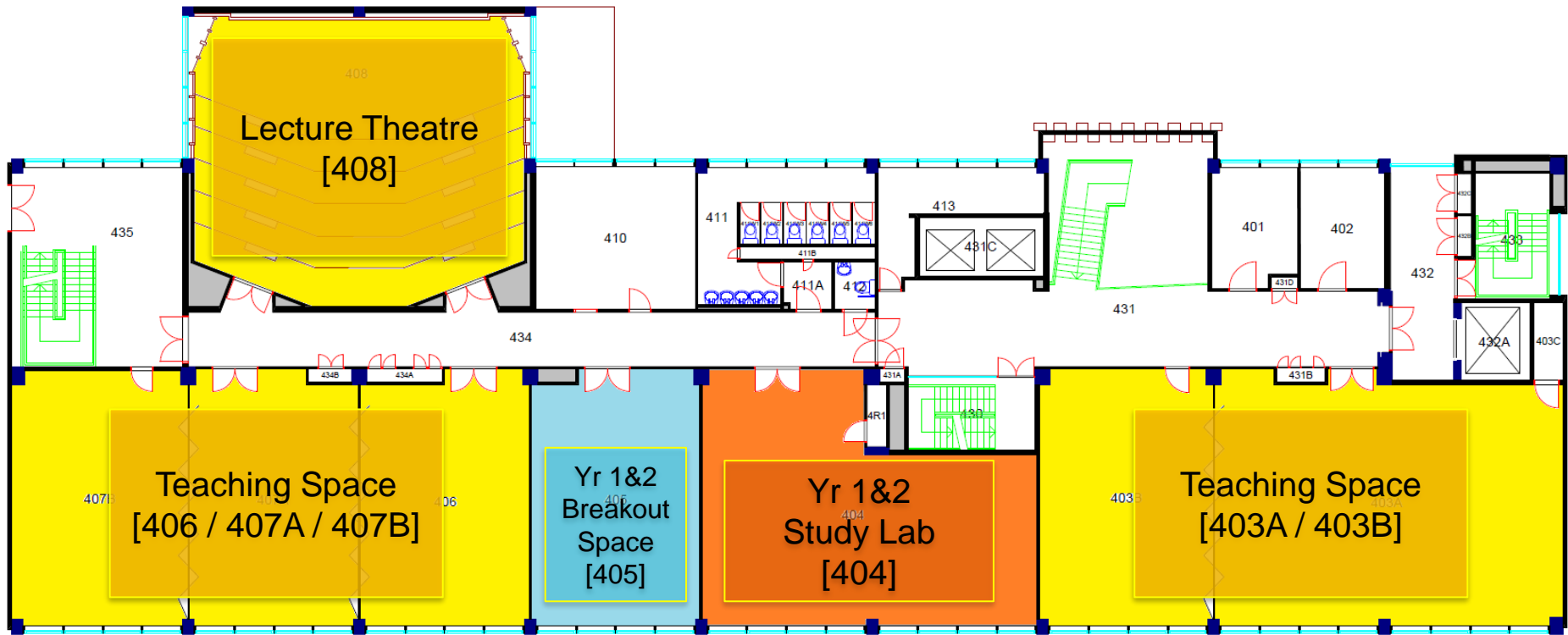
Level 2 Floor Plan



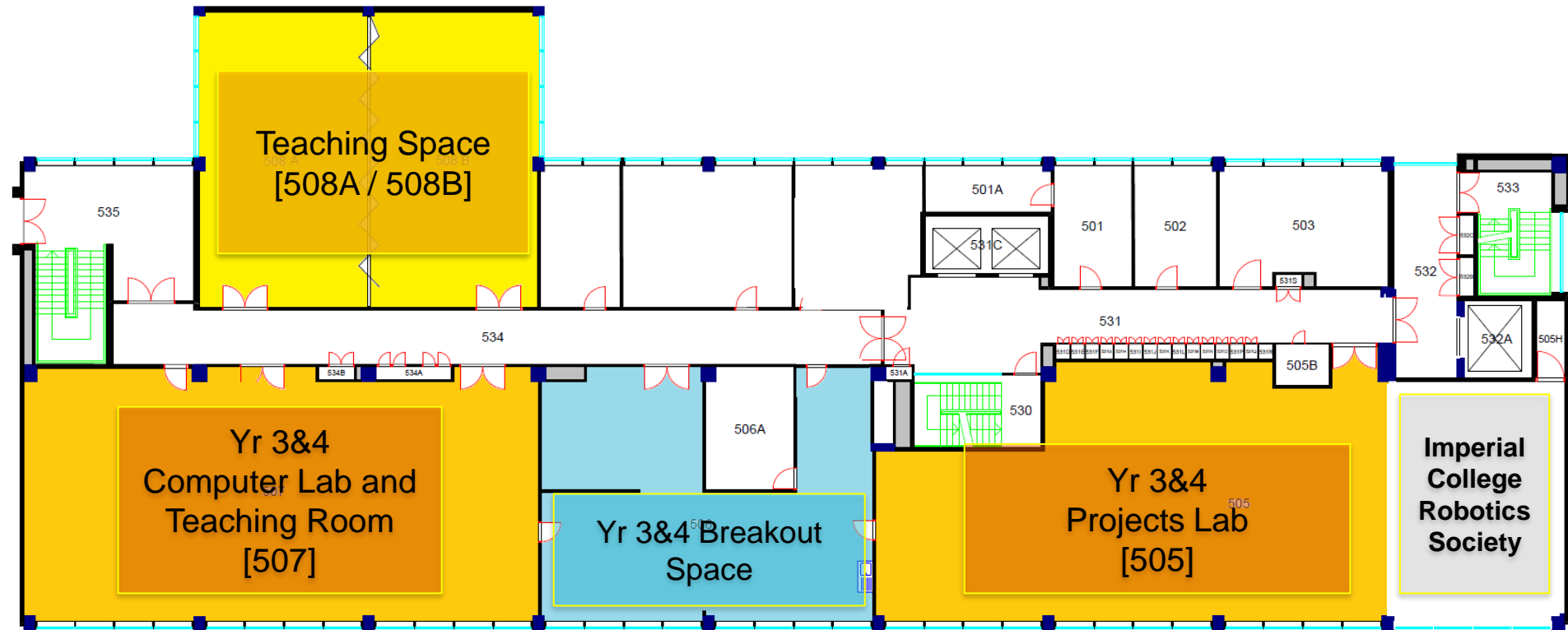
Level 3 Floor Plan



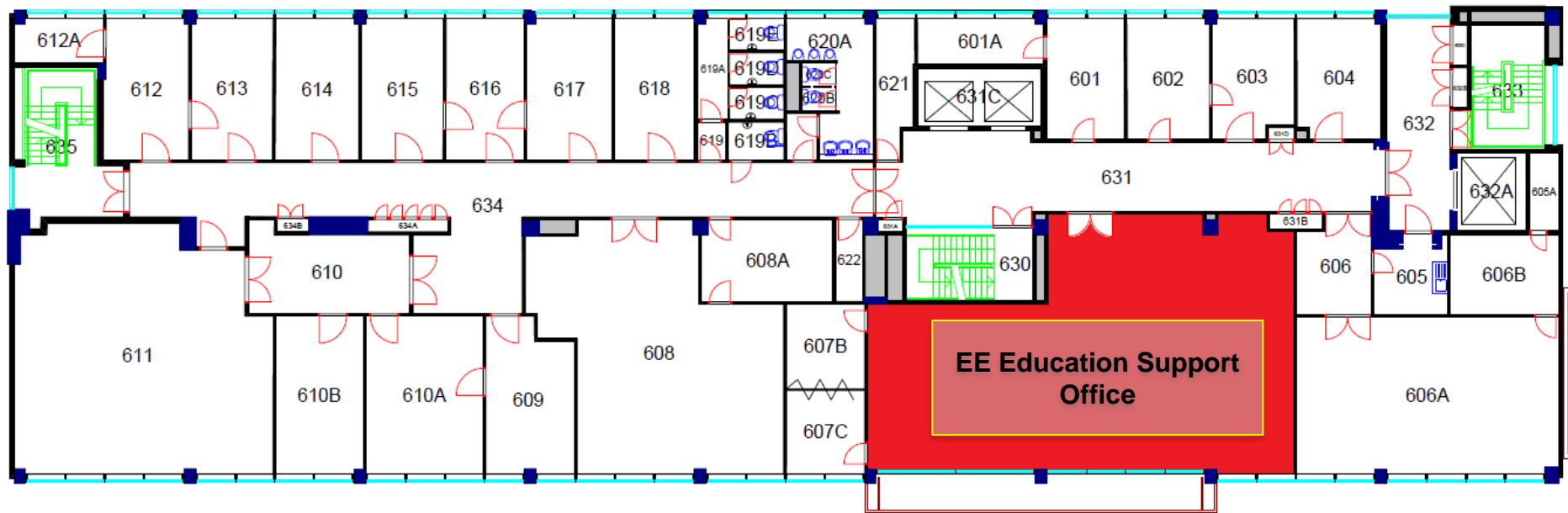
Level 4 Floor Plan



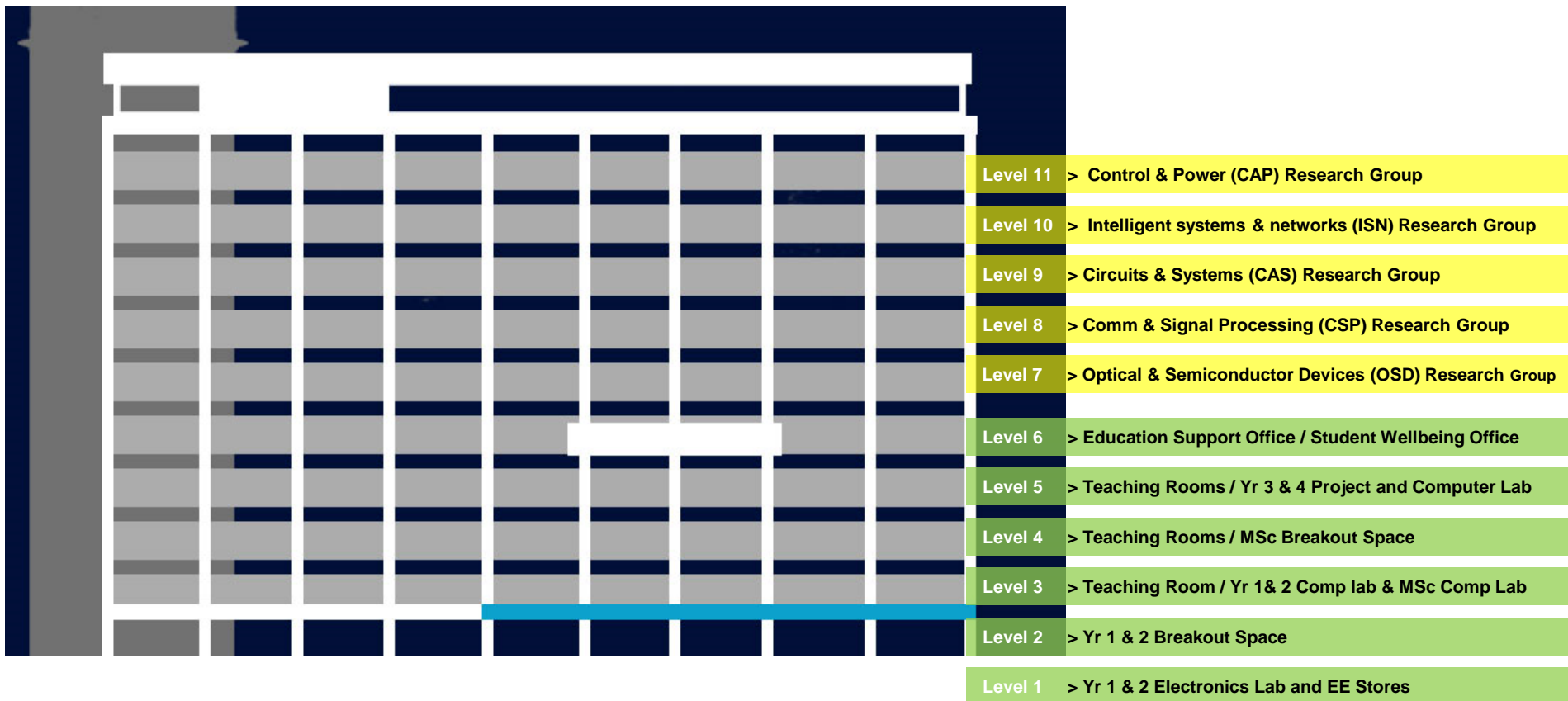
Level 5 Floor Plan



Level 6 Floor Plan



Electrical Engineering Building Plan



SafeZone App



SafeZone has been designed to contact the Security Team and locate you anywhere on campus. [Download the app](#)

SALUS and Building Defects

Accidents & incidents

Please report **all accidents and incidents** using the online [SALUS form](#)

Report emergencies, building defects and security incidents

Please report **all building defects** via the online [Customer Service Centre](#)



Emergency

Emergency contacts, by campus



Building defects and faults

Building defects should be reported to Estates Operations Customer Services Centre:

For urgent matters call us: Internal: 48000; External: 020 7594 8000

[Report it online](#)

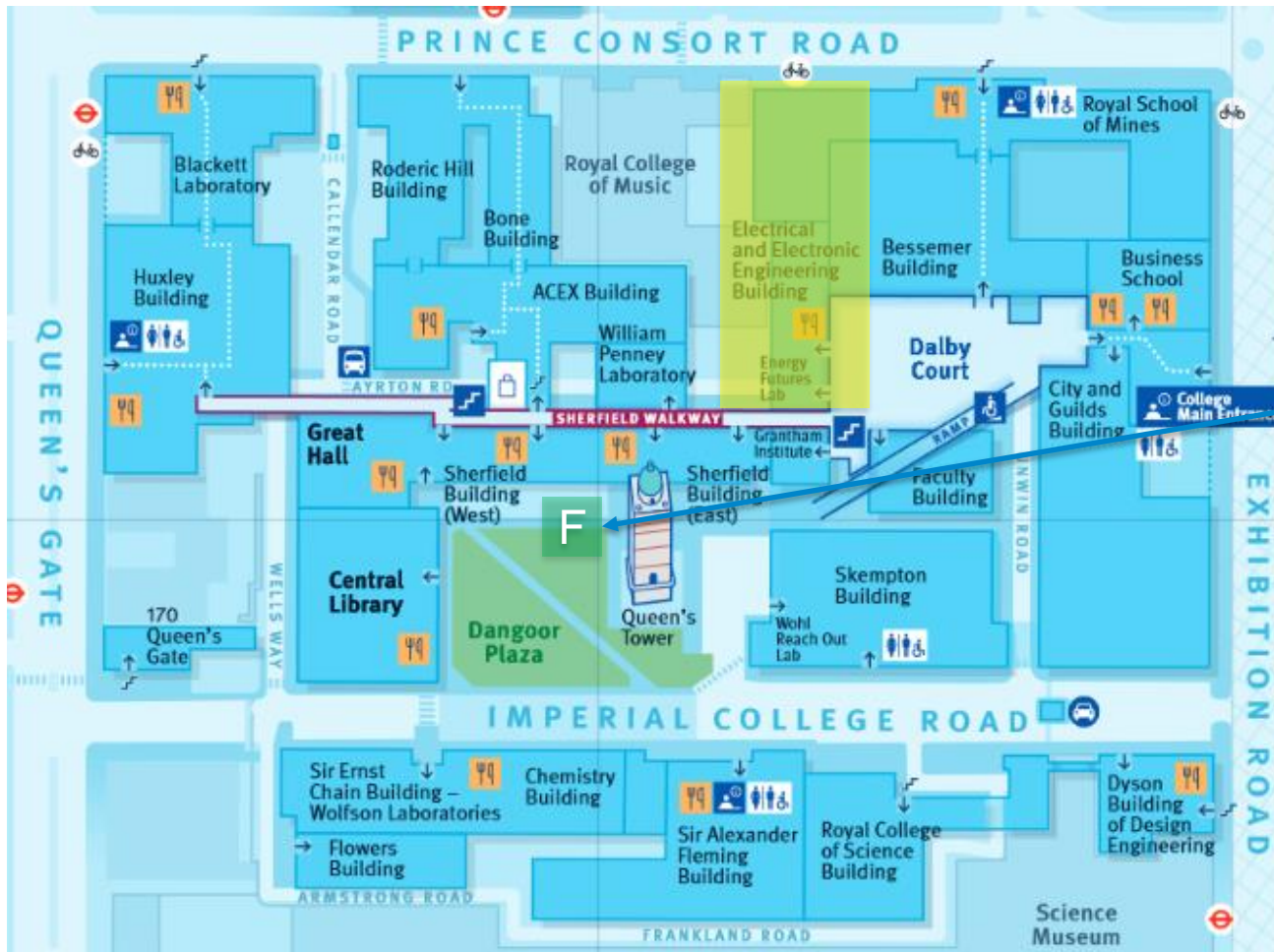


Non Emergency Security reporting

[Report a crime or incident online](#)

Imperial College London

Fire Assembly Point



Follow Fire Exit route
from the building to
Assembly Point F
(Queen's Lawn)

Imperial College
London

Introduction to Fire Safety Video



(11 mins)

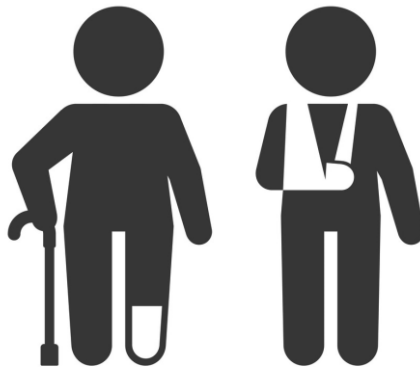
First Aid

- Please call **4444 (from internal phone)** or dial **0207 589 1000 (from mobile phone)** to call Security Officers who are all first aid trained



Personal Emergency Evacuation Plan (PEEP)

- Should you have a temporary or permanent disability at any time when on site, please contact Zia Rahman to arrange an evacuation plan specific to your needs.



Mr Zia Rahman
Department Safety Officer
Office: 302
Mob: 07852 850 186
Email: z.rahman@imperial.ac.uk

Hazardous Areas / Procedures

- Use of laboratory or workshop equipment is prohibited without permission and UG students must be supervised

Department Safety Officer

Zia Rahman : z.Rahman@imperial.ac.uk

Departmental Chemical Safety

Dr Zahid Durrani : z.durrani@imperial.ac.uk

Departmental Laser Safety

Prof. Andrew Holmes : a.holmes@imperial.ac.uk

Dept. policy on electrical equipment

- ALL mains-powered electrical equipment you bring into the building should have a valid **Portable Appliance Test (PAT)** label
- If there is no label, or the test period has expired, you **MUST NOT** use the equipment or adaptors
- Please contact Laboratory Manager Paul Norman (p.norman@imperial.ac.uk) throughout October to arrange a PAT for all equipment likely to be used on site.

PASS	Appliance ID: EE 306305		ELECTRICAL SAFETY TEST
	Test Date: 10.10.23	Next Test: 10.10.24	
	Tested By: P.N	Fuse Rating: 13amp	

Dept. Notices and Safety Committee

- Department Safety Notice board is located on the level 1 corridor
- Departmental Safety Committee meet three times throughout the academic year. If you have anything you wish to raise, please contact your Undergraduate representative
- Further guidance and information can be found on the [EEE Department safety page](#)