

# Covid-19 behaviours in the Philippines

► **Report** September 2020

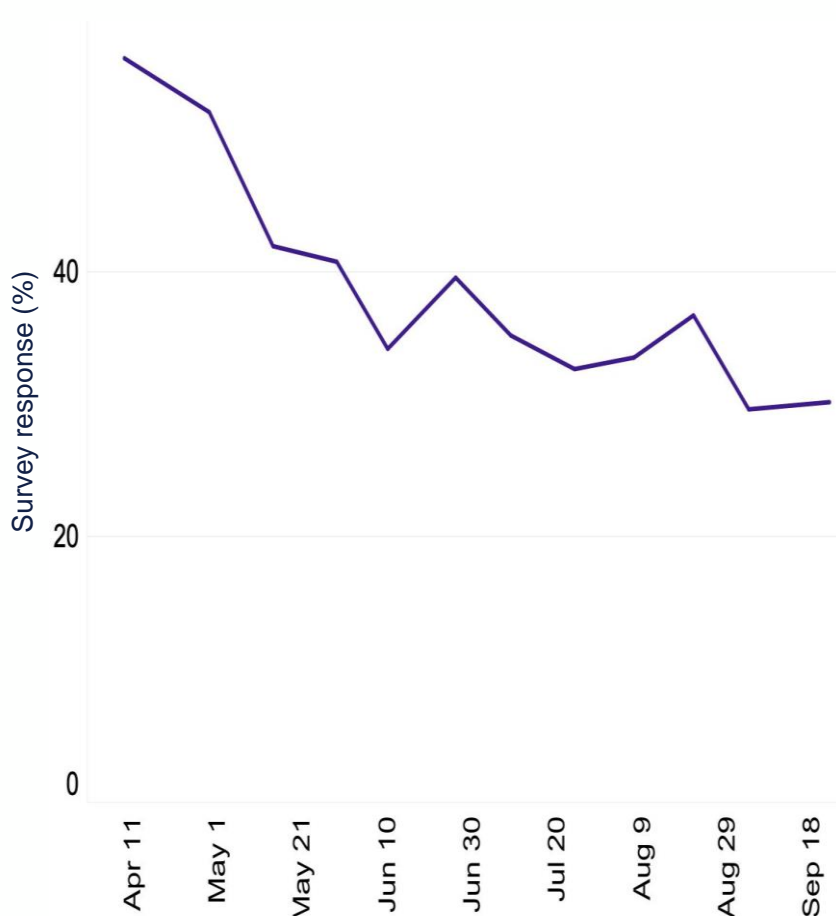
Insights and trends in people's behaviours related to COVID-19. Brought to you by a team of health and behavioural experts at the Institute of Global Health Innovation (IGHI) at Imperial College London and YouGov. These reports are created on a regular basis, following new survey results.

# Are people in the Philippines returning to work?

This graph shows the percentage of people not working from outside their home between April and September, 2020.

▲ As of September 22<sup>nd</sup> 2020

Thinking about the next 7 days... will you be working outside your home in one of the following roles? Percentage of respondents that answered, "No, I will not be working from outside my home".



The share of people who have stated they will not be working from outside their home has decreased since April.

**30%** 

of people in the Philippines will not be working outside their homes.

**26pp\*** 

decrease (from 56% to 30%) in people not working outside their home compared to April

Among respondents who stated they would be working outside their home, **food retail** (8%), **school** (7%), **healthcare** (7%), and **other/not sure** (26%) work accounted for the largest share of people working outside the home.



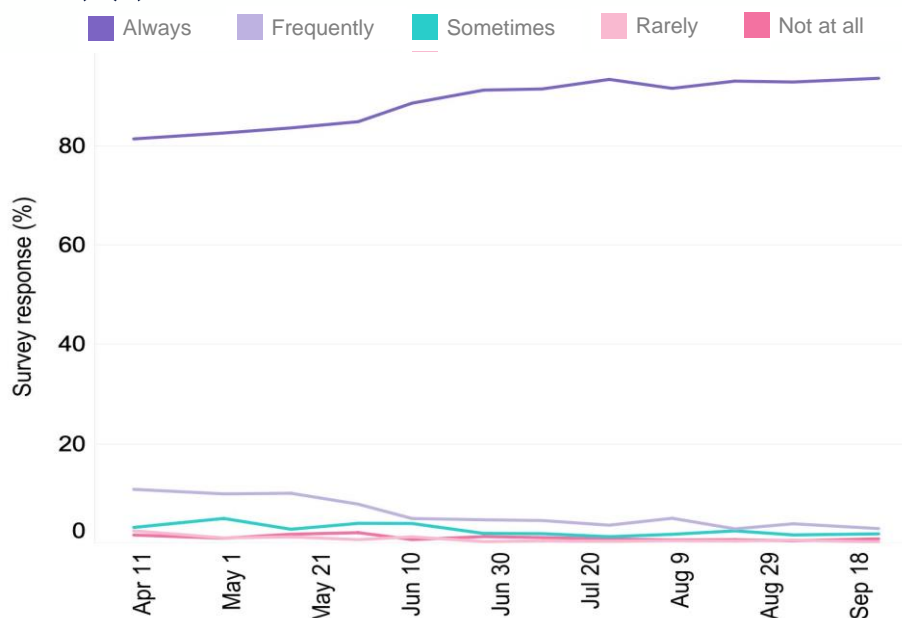
\*pp= percentage point

# How likely are people in the Philippines to wear face masks?

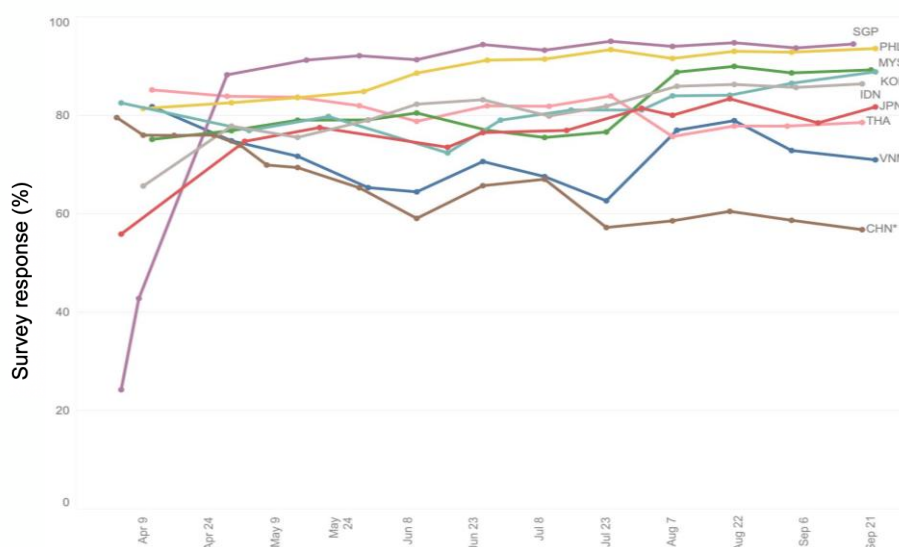
These graphs show the face mask use in the Philippines between April and September, 2020 and a comparison with other Asian countries.

*As of September 22<sup>nd</sup>, 94% of respondents in the Philippines reported always wearing a face mask outside their home. The share of these respondents has consistently remained over 80% throughout the survey period. Across Asian countries surveyed the same week, the Philippines and Singapore and have the highest share of respondents who always wear a face mask outside their homes while China has the lowest (59%).*

Thinking about the last 7 days how often have you worn a face mask outside your home to protect yourself or others from coronavirus (COVID-19)? (%)



Asian country breakdown of respondents who answered “Always” to wearing a face mask outside the home (%).



\*China is representative of the 'online population'. All other countries, areas or territories are representative of the national population

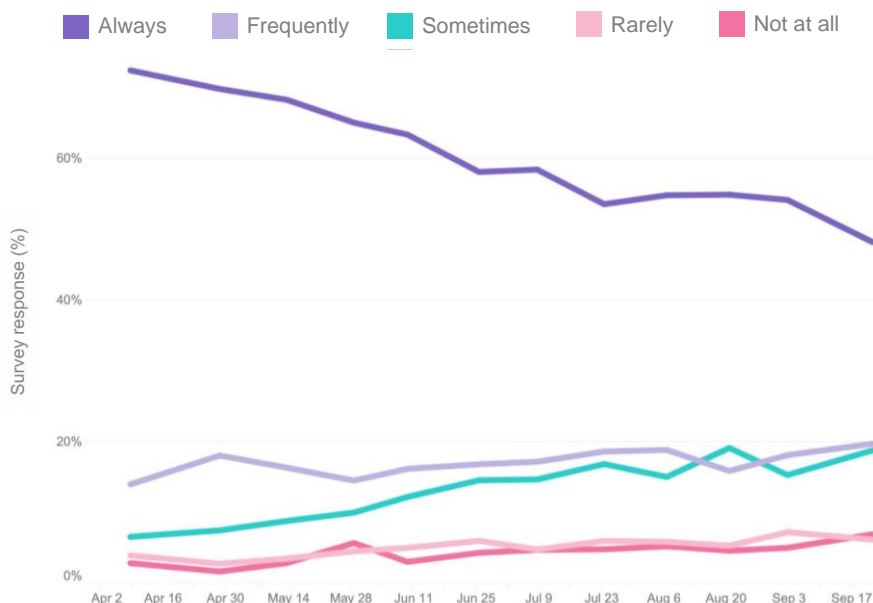
Compare your data with that of 29 other countries, areas or territories on

[coviddatahub.com](https://coviddatahub.com)

# How are behaviours in the Philippines changing?

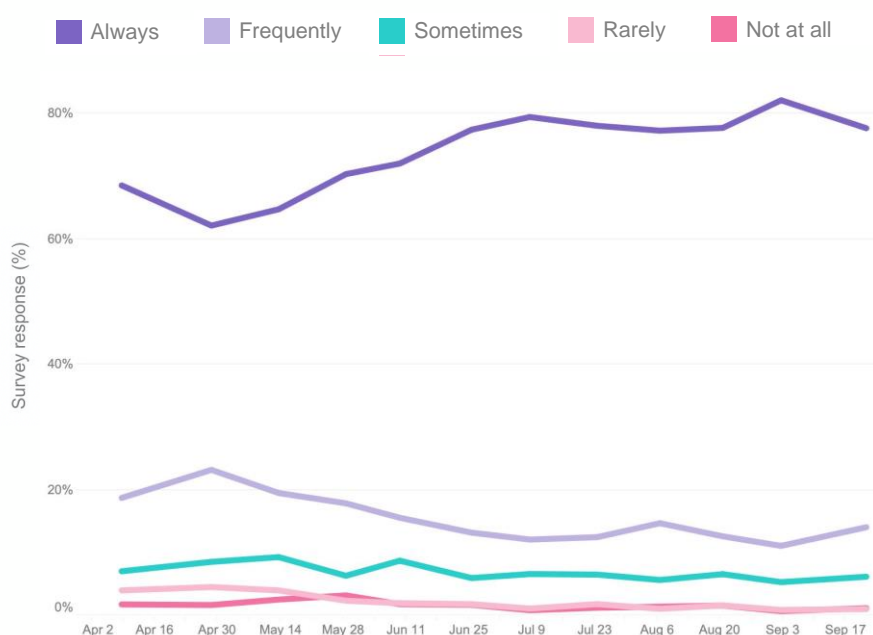
These graphs show the changes in behaviours in the Philippines between April and September, 2020.

**Thinking about the last 7 days... how often have you avoided taking public transport to protect yourselves or others from coronavirus (COVID-19)? (%)**



Compared to April, the share of respondents that reported **always avoiding** taking public transport has **decreased** from 72% to **48%**, while the share of respondents who reported **rarely or not at all avoiding** it has **increased** from 7% to **13%**.

**Thinking about the last 7 days... how often have you use hand sanitizer to protect yourself or others from coronavirus (COVID-19)? (%)**



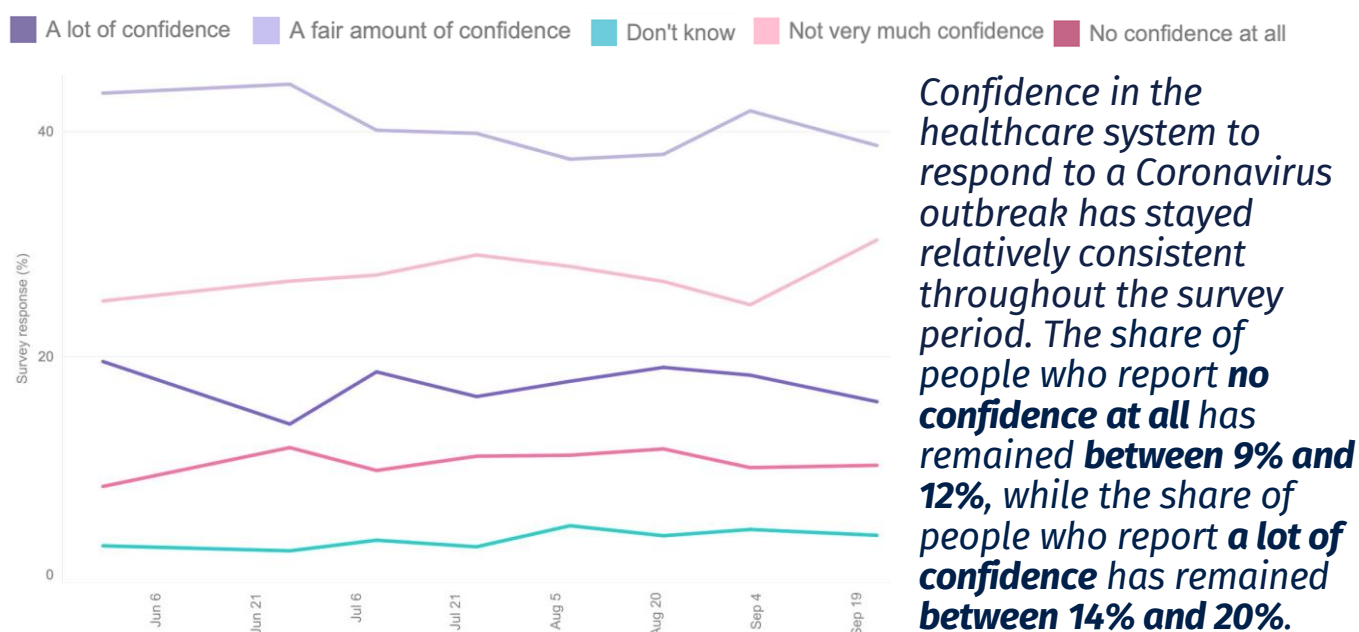
**78%** of respondents report to **always** use hand sanitizer, an 18–percentage point increase since late April. The percentage of respondents who reported **rarely or not at all** using hand sanitizer has decreased from 6% to **2%** throughout the survey period.

# How confident are people in the healthcare system and government responses to COVID-19?

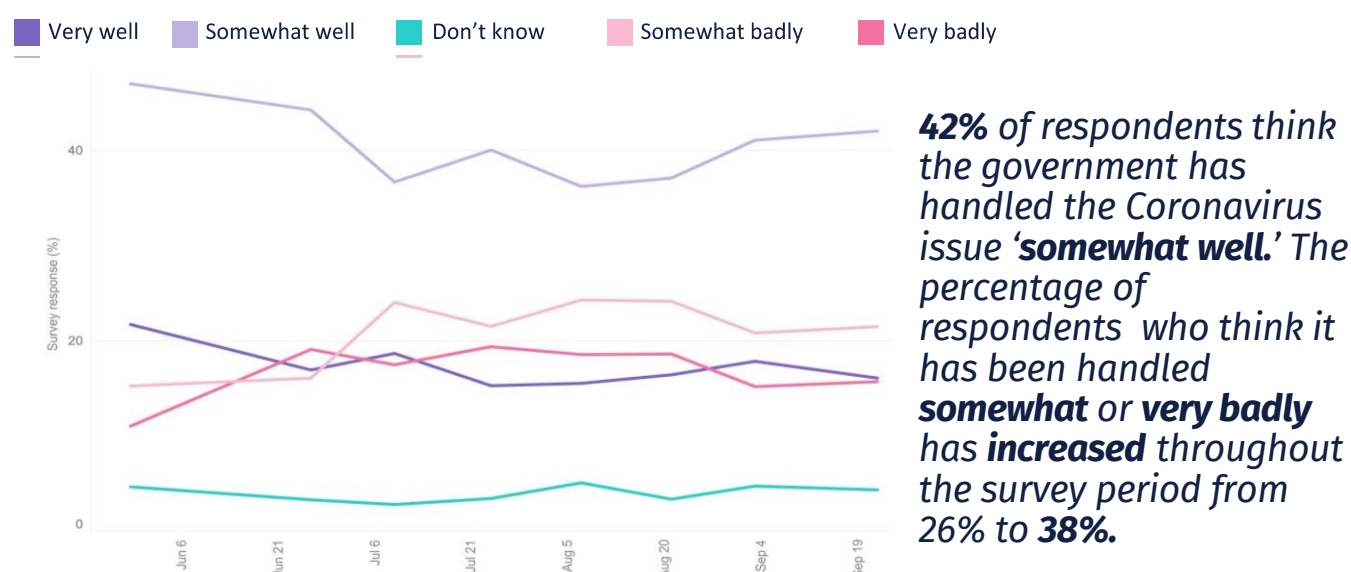
These graphs show confidence in response and handling of the pandemic by the healthcare system and the government.

As of September 22<sup>nd</sup>, 55% of respondents stated a lot or a fair amount of confidence in the healthcare system’s response to a COVID-19 outbreak. 58% of respondents believe the government handled the issue of the Coronavirus very or somewhat well.

How much confidence do you have in the healthcare system to respond to a Coronavirus (COVID-19) outbreak in your country?



How well or badly do you think the Government are handling the issue of the Coronavirus (COVID-19)?

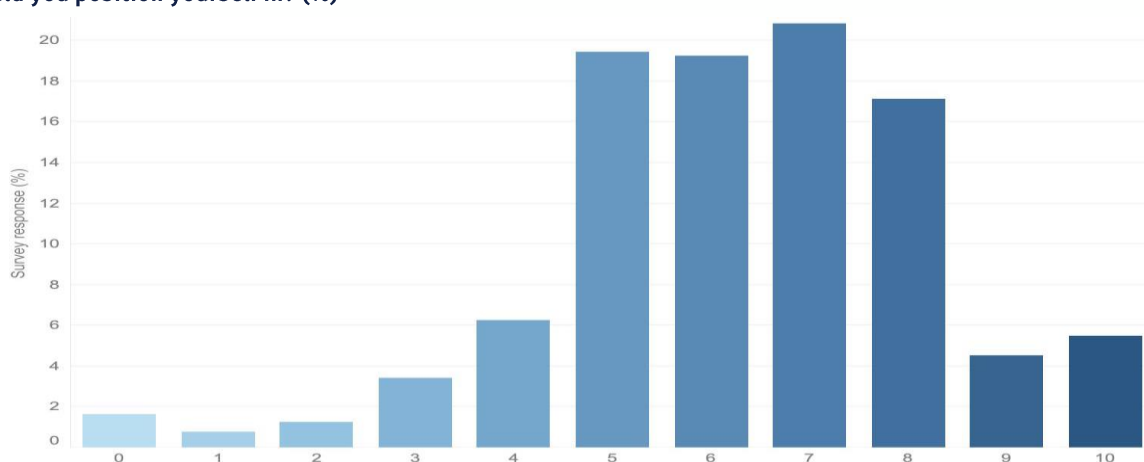


# How does the Philippines’s life satisfaction compare to that of its peers?

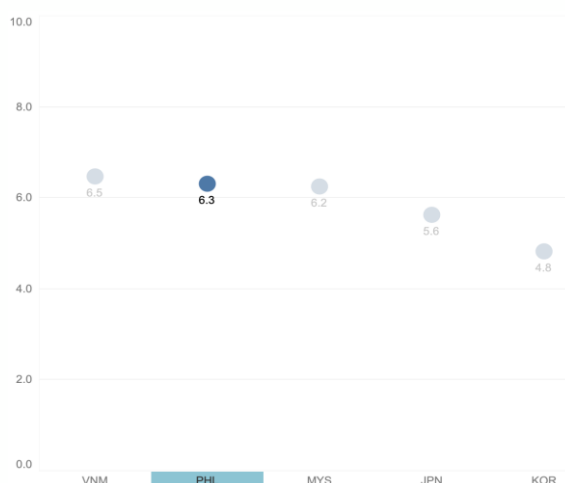
This graph shows the life satisfaction score of the Philippines compared to other Asian countries surveyed.

*The Philippines reported a life satisfaction score comparable to most other Asian countries surveyed the same week (September 21<sup>st</sup> through September 27<sup>th</sup>). Japan and South Korea reported the lowest scores, while Vietnam reported the highest.*

Please imagine a ladder with steps numbered from zero at the bottom to 10 at the top. The top of the ladder represents the best possible life for you and the bottom represents the worst possible life for you. On which step of the ladder would you position yourself in? (%)



Average Cantril ladder Score



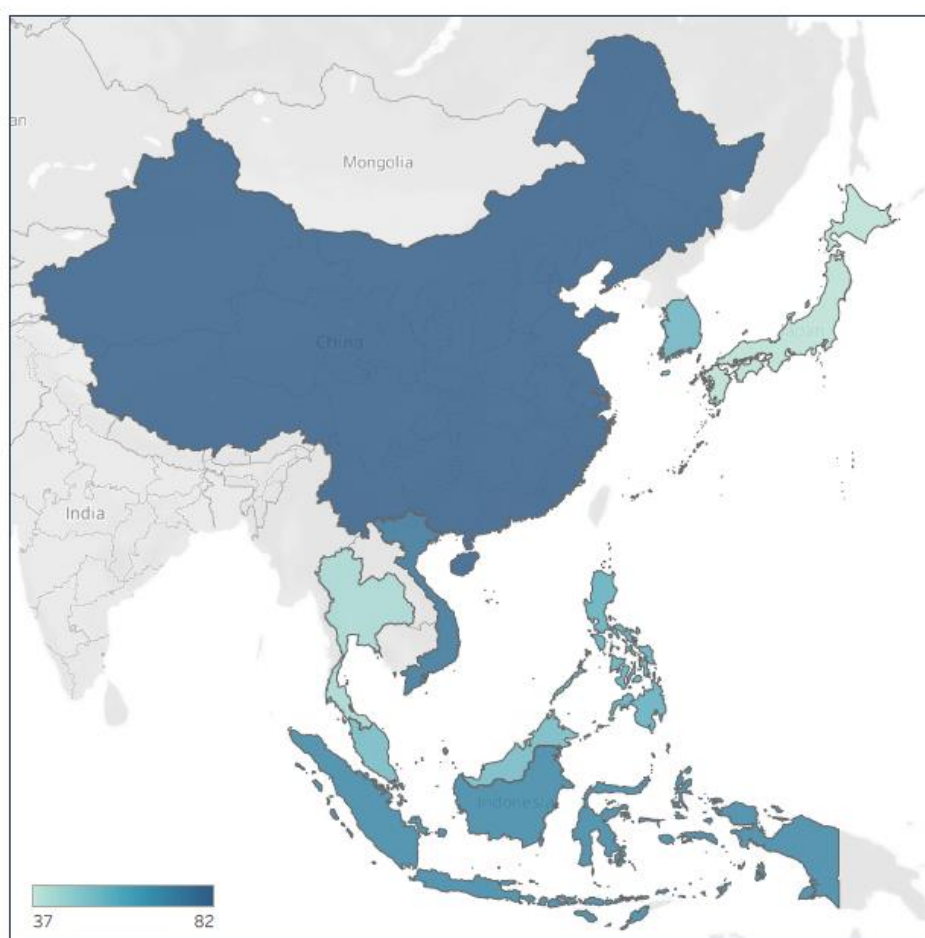
*The Cantril ladder serves as a proxy for life satisfaction. Life satisfaction is a powerful measure of the quality of people’s lives. The annual World Happiness Report attributes the differences over time and between countries to good health, income and the quality of social environment. These factors are changing under COVID-19, often in ways we have never experienced before. The YouGov life satisfaction data, collected regularly as the pandemic evolves in each surveyed country, provide a valuable barometer reading of life under COVID-19, reflecting each country’s institutions and policies.*

\*China is representative of the 'online population'. All other countries, areas or territories are representative of the national population

## How does the Philippines’s government response compare to that of its peers?

This map highlights the government stringency score in the Philippines and other Asian countries surveyed.

*As of September 24<sup>th</sup>, China had the most stringent government and Japan had the least stringent across Asian countries surveyed. The University of Oxford’s Government Stringency Index is a measure of the number and severity of measures put in place by the governments to address the COVID-19 pandemic.*



<b>China</b>	<b>Vietnam</b>	<b>Indonesia</b>	<b>Philippines</b>	<b>South Korea</b>
<b>82</b>	<b>75</b>	<b>69</b>	<b>56</b>	<b>54</b>
	<b>Singapore</b>	<b>Malaysia</b>	<b>Thailand</b>	<b>Japan</b>
	<b>52</b>	<b>52</b>	<b>41</b>	<b>37</b>

Policy measures and dates are provided by University of Oxford <https://bit.ly/34DPzZB>

Compare your data with that of 29 other countries, areas or territories on

[coviddatahub.com](https://coviddatahub.com)

# About this report

Led by Imperial College London's  
Institute of Global Health Innovation  
(IGHI) and YouGov

**Imperial College  
London**

**Institute of  
Global Health Innovation**

- ▶ Professor the Lord Ara Darzi of Denham  
Co-Director, IGHI
- ▶ Sarah P. Jones  
Faculty of Medicine,  
Department of Surgery &  
Cancer Research Postgraduate
- ▶ Melanie Leis  
Director, Big Data  
and Analytical Unit (BDAU), IGHI
- ▶ Dr David Nabarro  
Co-Director, IGHI  
Special Envoy of WHO Director  
General on COVID-19
- ▶ Gianluca Fontana  
Operations Director  
and Senior Policy Fellow, IGHI
- ▶ Dr Roberto Fernandez Crespo  
Analytics Fellow, BDAU
- ▶ Dr Manar Shafat  
Contributor, BDAU
- ▶ Natalie Melas-Kyriazi  
Contributor, BDAU

## Research contributors



Professor John F. Helliwell  
Co-editor, World Happiness Report  
  
Vancouver School of Economics at the  
University of British Columbia, Research  
Associate of the NBER and Distinguished  
Fellow of the Canadian Institute for  
Advanced Research

Professor Jeffrey D. Sachs  
Co-editor, World Happiness Report  
  
Director of the Center for Sustainable  
Development at Columbia University  
Director of the UN Sustainable  
Development Solutions Network and SDG  
Advocate under Secretary-General António  
Guterres



Professor the Lord Richard Layard  
Co-editor, World Happiness Report  
  
Founder-Director of the Centre for  
Economics Performance at the London  
School of Economics  
Co-founder of Action for Happiness

Professor Jan-Emmanuel De Neve  
Co-editor, World Happiness Report  
  
Director of the Wellbeing Research Centre  
at University of Oxford  
KSI Fellow and Vice-Principal of Harris  
Manchester College

## Realised by



Contributors to the Imperial College  
London - YouGov survey include: Professor  
Helen Ward, Dr. Christina J. Atchinson, Dr.  
Benjamin C. Lambert, and Gavin Ellison

The Imperial College London - YouGov  
team wishes to express their grateful  
support to Stephan Shakespeare, Marcus  
Roberts, Alex MacIntosh, Chris Curtis, Eir  
Nolsoe, Sharon Pacolor, Lenny Naar, Alice  
Blencowe, Steve Adams from Visual DJ Ltd.  
and volunteers from Made by Many:  
Rebecca Foy, Anna Pagan, Gareth Cozens,  
Callum Jefferies, Neethu Mathew, Micha  
Nicheva, Kristof Goossens

## Supporters



This research is made possible by  
generous support for the public good  
from YouGov Plc.

The Imperial College London - YouGov  
team gratefully acknowledges the kind  
support of Edelman Intelligence for their  
global social listening contribution

Question for the research team? Get in touch [here](#)  
Press enquiry? Contact Dr. Justine Alford at [j.alford@imperial.ac.uk](mailto:j.alford@imperial.ac.uk)



# For more behavioural data on a global level, visit [coviddatahub.com](https://coviddatahub.com) to explore our interactive charts

The [CovidDataHub.com](https://coviddatahub.com) project is a joint collaboration between the Institute of Global Health Innovation (IGHI) at Imperial College London and YouGov Plc to gather global insights on people's behaviours and life satisfaction in response to COVID-19. The research covers 29 countries, areas or territories and surveys are conducted on a regular basis since the first week of April.

This report is designed to provide insights on how different populations are responding to the pandemic, helping public health bodies in their efforts to limit the impact of the disease. Anonymised respondent level data is generously made available for all public health and academic institutions globally by YouGov Plc at our [GitHub site](#).

---

In collaboration with