

# Towards Equity in Health

## Breakout Room 2

Health equity for Gypsy, Roma, Traveller communities and other minority ethnic groups



- Rebecca Cave, Strategy Programme Manager & Trust Innovation Lead for the Royal Cornwall Hospitals NHS Trust (...but now Deputy GM for Medicine)
- Master of Public Health, University of Exeter (2021)
- Born in the most deprived area of Cornwall and lives in the second most deprived area of Cornwall



- Gareth Walsh, Advanced Public Health Practitioner, Wellbeing & Public Health, Cornwall Council
- Over 17 years working in Public Health in Cornwall with a background in Tobacco Control and NHS Health Checks
- Grew up in the Welsh valleys in an area classified as having 'deep-rooted deprivation'

slido

Please download and install the Slido app on all computers you use



# What is your role in supporting health equity of minority ethnic groups?

① Start presenting to display the poll results on this slide.

slido

Please download and install the  
Slido app on all computers you use



**Are you currently working on a  
project to improve health equity  
of an ethnic group?**

① Start presenting to display the poll results on this slide.

# Objectives

- Tell you our story about working with the GRT Community in Cornwall
- Provide the opportunity for you to ask us questions about the project
- Explore how you would approach engaging a minority group in a healthcare initiative

# REDUCING HEALTHCARE INEQUALITIES

The Core20PLUS5 approach is designed to support Integrated Care Systems to drive targeted action in healthcare inequalities improvement

## CORE20

The most deprived 20% of the national population as identified by the Index of Multiple Deprivation



Target population

# CORE20 PLUS5

Key clinical areas of health inequalities

1

## MATERNITY

ensuring continuity of care for women from Black, Asian and minority ethnic communities and from the most deprived groups



## SEVERE MENTAL ILLNESS (SMI)

ensuring annual health checks for 60% of those living with SMI (bringing SMI in line with the success seen in Learning Disabilities)



## CHRONIC RESPIRATORY DISEASE

a clear focus on Chronic Obstructive Pulmonary Disease (COPD), driving up uptake of Covid, Flu and Pneumonia vaccines to reduce infective exacerbations and emergency hospital admissions due to those exacerbations



## EARLY CANCER DIAGNOSIS

75% of cases diagnosed at stage 1 or 2 by 2028



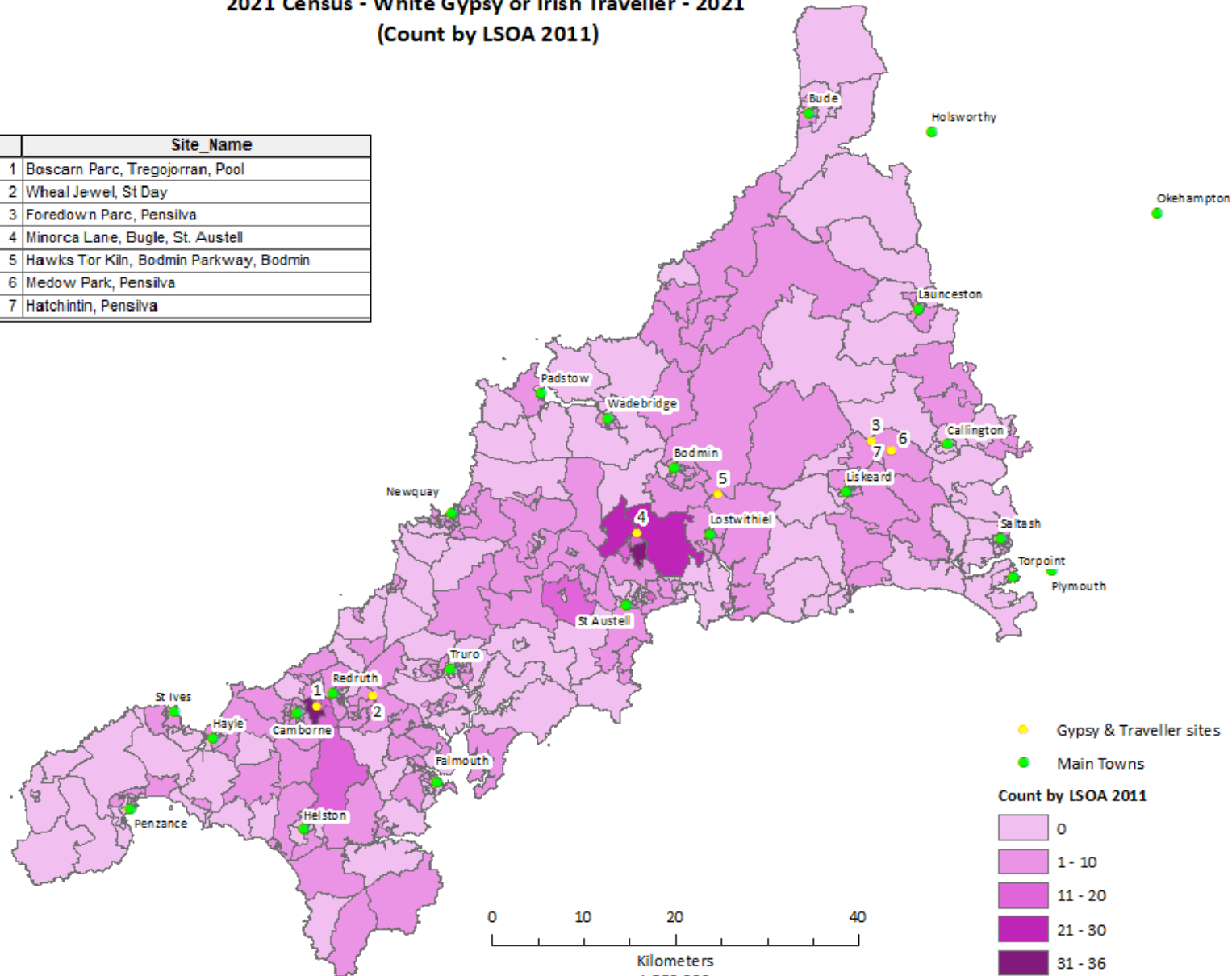
HYPERLIPIDAEMIA AND MANAGEMENT

- Core20plus5 Accelerator system for the South West region, awarded Dec 2022
- Project team across Public Health, the acute provider Trust and General Practice
- Focus on GRT and cancer screening.
  - GRT site in GP catchment area
  - Cancer pathway touches all of our organisations, multiple perspectives



**2021 Census - White Gypsy or Irish Traveller - 2021  
(Count by LSOA 2011)**

ID_Number	Site_Name
1	Boscarn Parc, Tregojorran, Pool
2	Wheal Jewel, St Day
3	Foredown Parc, Pensilva
4	Minorca Lane, Bugle, St. Austell
5	Hawks Tor Kiln, Bodmin Parkway, Bodmin
6	Meadow Park, Pensilva
7	Hatchintin, Pensilva



GP, Dec 2022  
 Public Health, Intelligence Team  
 Cornwall Council  
 phdesk@cornwall.gov.uk  
 © Crown copyright. All rights reserved.

# Health Inequalities for GRT Communities

## Low life expectancy:

- Reduced by 10 and 25 years, with an average of six fewer quality adjusted life years compared to non GRT.
- In Cornwall 12-year reduction in life expectancy.

## Mental health:

- Anxiety and depression 6 times higher than non GRT population
- Suicide rate 7 times higher than non GRT population.

## Poor maternal health outcomes:

- The highest maternal death rate amongst all ethnic groups.
- Very high perinatal death rates and infant deaths.
- Poor breast-feeding rates in the GRT population.

## Poor uptake of preventative health measures:

- Low immunisation rate
- Low uptake cancer screening





# Our Approach

- Easier routes to engagement with women so target female screening programmes
- Initially – breast screening vans brought to site
- Engagement with Traveller Space and healthcare professionals with experience working with GRT communities told us this was the wrong approach!
- Needs assessment completed to inform the work needed, along with input from Traveller Space
- Cervical screening – deliver education sessions at the site, GP led for familiarity, flexibility of screening location, more discrete than bringing a van to site

# Results

- Clinical results-13 eligible for a smear test- 8 completed
- Engagement results- improved relationship with Traveller Space which has enabled Healthy Cornwall engagement
- Monthly MDT meetings established
- Qualitative feedback and expressed health need

# Community feedback

## Accessing primary care services

- General practice and the Minor Injuries Units were the most likely to be used to access healthcare
- Face-to-face consultations were the preferred choice over telephone or e-consultations
- Literacy was a common barrier to accessing health services
- Over half of respondents had access to private transport to attend health appointments with the remainder relying on public transport or support workers to accompany them to appointments
- Most respondents reported difficulty registering with a dentist and there was frequent use of the emergency dentist reported to access any dental care

The perceived prejudice of health staff was also reported as a barrier to access. Some respondents reported this as a reason they would not attend health appointment with concern about being judged by staff.



# Next Steps

- Use the Cornwall Council GRT Strategy to support proposal for a GRT health improvement programme for Cornwall
- Seek funding for GP time to expand to further GRT sites
- Explore opportunities to expand to other screening programmes eg FIT
- Address expressed health needs (e.g. dental health)

Questions about  
our Core20plus5  
Accelerator project



# Small Group Activity

- **How would you approach engaging a minority ethnic group in a healthcare initiative?**
  - What would be the challenges/barriers to engagement with your chosen minority group and how would you plan to overcome them?
  - What do you plan to do and by when?
- 10 minute discussion in groups, then feedback

Black African

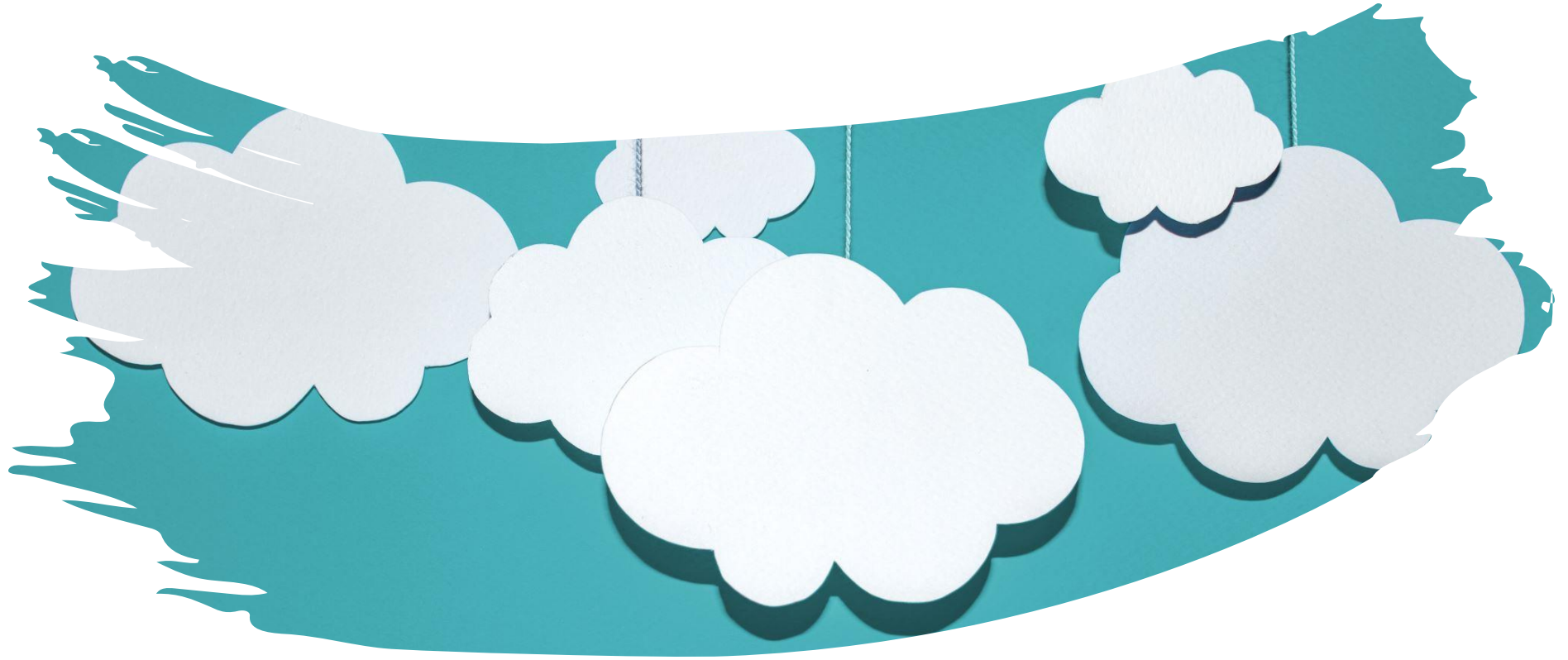
Bangladeshi

Pakistani

Indian

Black Carribean

Asian



**Feedback**

# Key Messages



- Don't assume you know, there is always more to know
- Act on your findings, do something
- Tell people what you found and did, you might end up here next time!



**slido**

Please download and install the Slido app on all computers you use



**What have you found useful about this session?**

① Start presenting to display the poll results on this slide.