

Breaking Experimental Reports into Bite- Size Chunks

Jason Riley

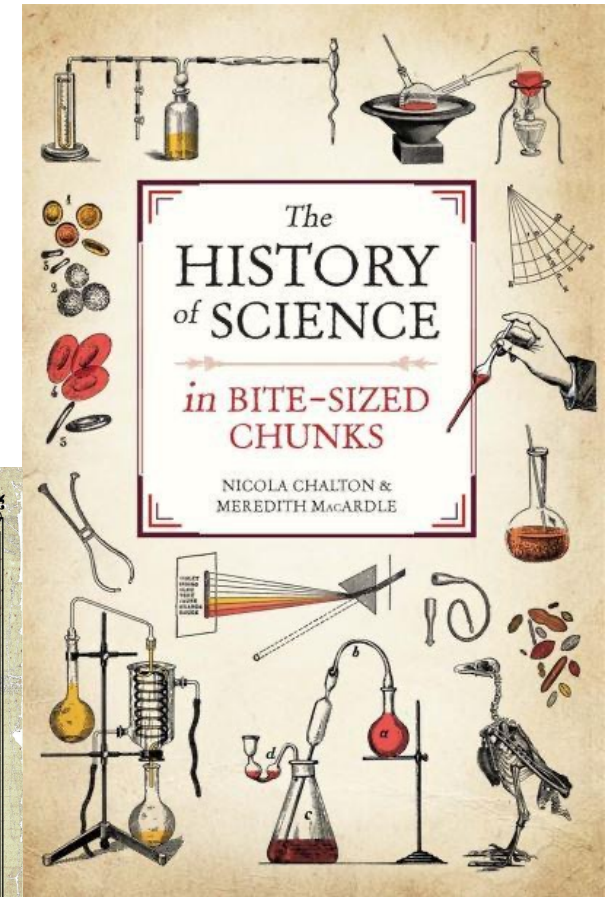
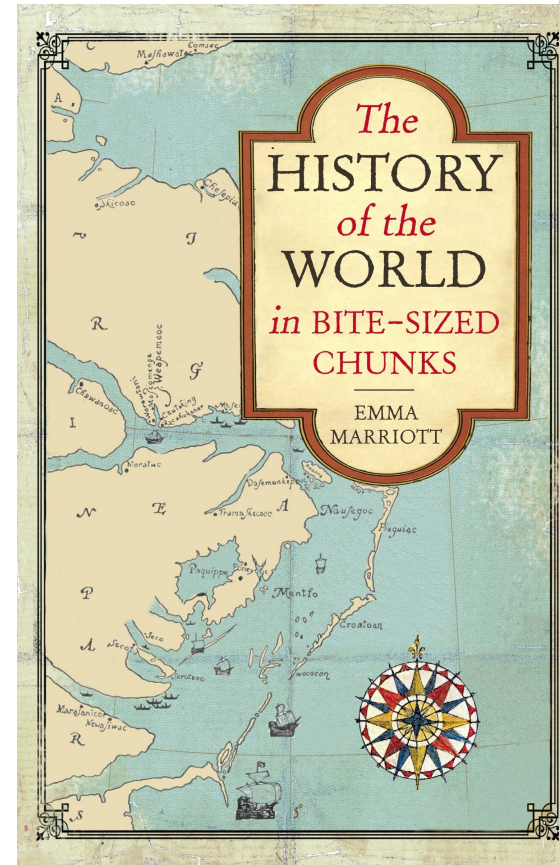
Paul Franklyn

Priya Saravarapavan

Eleanora D'Elisa

Jonathan Rackham

Manjula Silva



The Traditional Year 1 Weekly Laboratory Class

Develop
Practical
Skills



Analyse Data

Team Work

Write Reports

Introduce/
Reinforce
Science and
Engineering
Concepts

Authentic Assessment

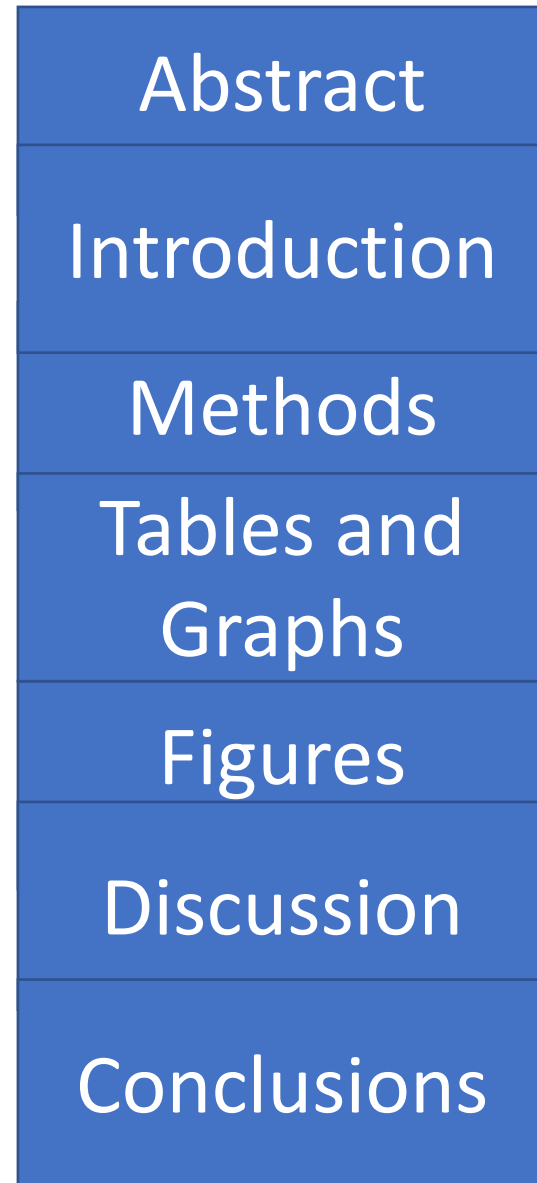
Our Learning and Teaching Strategy sets out our ambition to deliver a world-class educational experience which is **research-based**, student-centred, evidence-based, inclusive and diverse, outward-looking and technology enhanced.

**The only
difference
between
mucking around
and research is
writing it down.**



The Problems with a Full Report for Every Lab

TIME



FEEDBACK

Bite-Sized Chunks

Polymers

Introduction

Fracture

Tables and Graphs

Steels

Discussion

Abstract
(graphical + text)

Crystallography

Figures
(image, schematic, fig)

Conclusions

Metallography

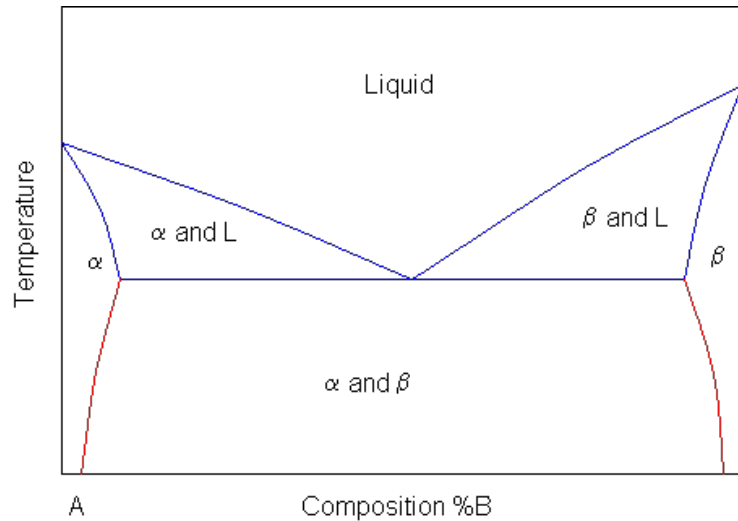
Electrical Properties

Methods

Titration

Pulling It All Back Together

Cooling Curves



© DoITPoMS

Abstract
Introduction
Methods
Tables and Graphs
Figures
Discussion
Conclusions

Rheology

Support:
CFA Live Workshop.

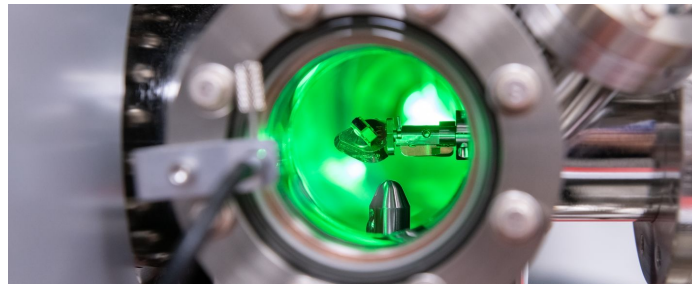
Assessment:
Students choose 5 feedback points from previous reports. 25% of the grade is for correctly responding to the feedback.

Following-On

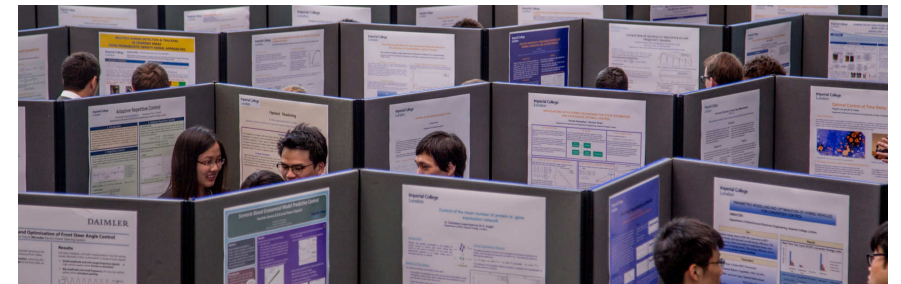
Year 2



Year 3



Year 4



Does It Work?

